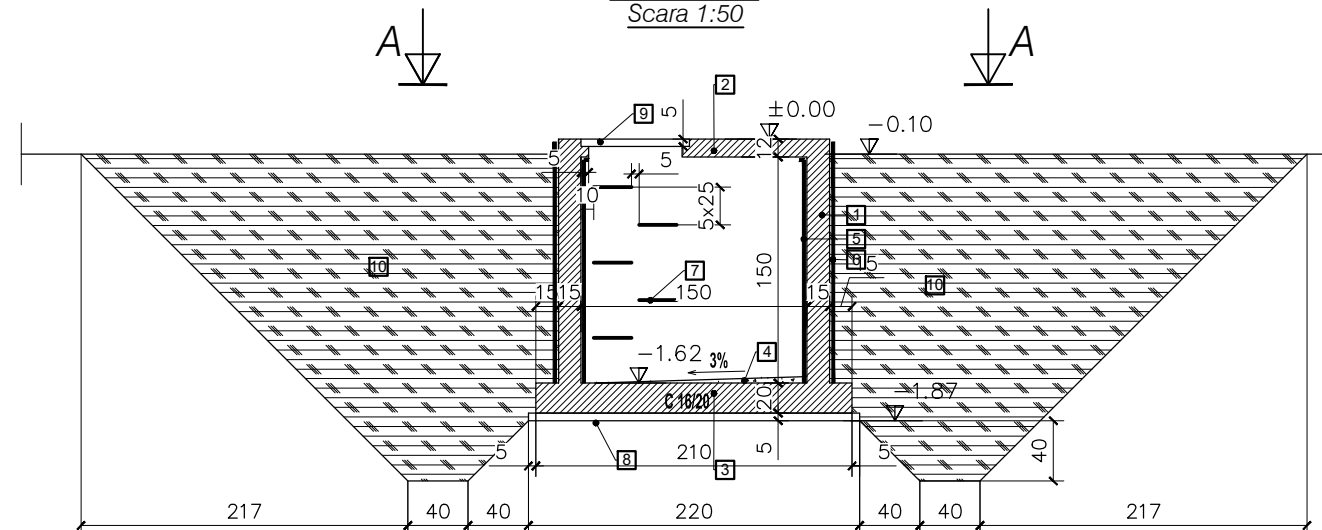
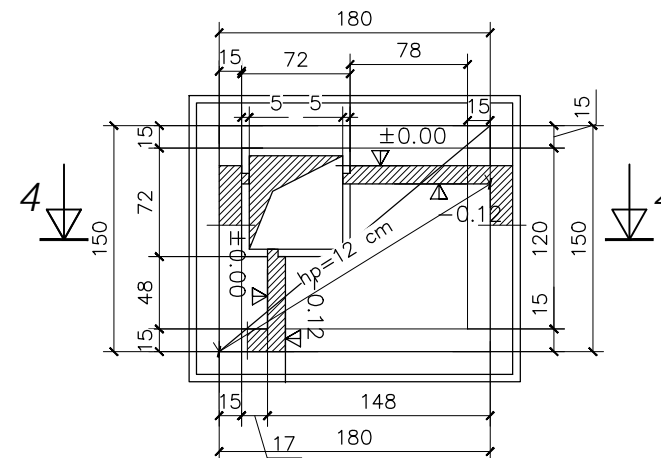


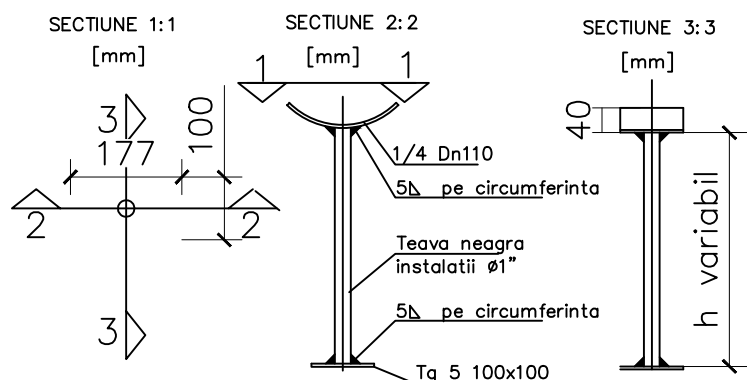
Sectiunea 4-4  
Scara 1:50



Vederea A-A  
Scara 1:50

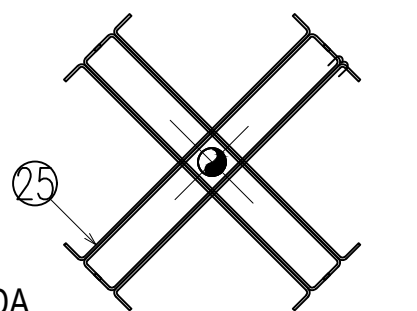


DETALII EXECUTIE SUPTI VANE  
SCARA 1:20

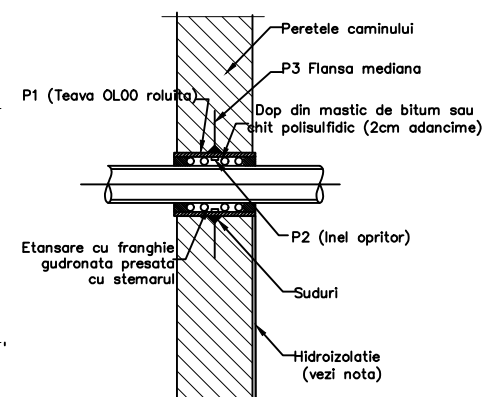


PROTECTIE ANTICIROZIVA:  
-1 Strat grund  
-1 Strat vopsea epoxidica

25 4010, PC 52 L=1.465m  
130



DETALIU DE REALIZARE A ETANSEITATII LA  
TRAVERSAREA CONDUCTELOR PRIN PERETII  
CAMINELOR DE BETON ARMAT



PIESE DE TRECERE LA CAMINE

Dext PN6 (mm)	ANSAMBLU INCASTRAT IN PERETE										GREUTATI					TOTAL	
	P1 TEAVA OL00 ROLUITA			P2 INEL OPRITOR				P3 FLANSA MEDIANA			P2	P3	P2+P3	P1	P1	P1+P2+P3	P1+P2+P3
	di	de	δ	di	de	δ	S	di	de	δ				l=150	l=200	l=150	l=200
	(mm)	(mm)	(mm)	(mm)	(mm)	(mm)	(mm)	(mm)	(mm)	(mm)	kg	kg	kg	kg	kg	kg	kg
63	98	108	5	66	96	12	15	109	309	8	0.36	4.13	4.49	1.91	2.54	6.60	7.24
75	110	120	5	78	108	12	15	121	321	8	0.42	4.36	4.78	2.13	2.84	7.12	7.85
90	125	135	5	93	123	12	15	136	336	8	0.48	4.66	5.14	2.41	3.21	7.78	8.60
110	148	158	5	114	144	12	15	159	359	8	0.58	5.11	5.69	2.83	3.78	8.78	9.76
125	161	171	5	129	159	12	15	172	372	8	0.64	5.37	6.01	3.07	4.10	9.36	10.42
140	186	198	6	144	184	12	20	199	399	10	0.97	7.37	8.34	4.26	5.68	12.98	14.45
160	206	218	6	164	204	12	20	219	419	10	1.09	7.87	8.96	4.71	6.27	14.08	15.69
180	226	238	6	184	224	12	20	239	439	10	1.21	8.36	9.57	5.15	6.87	15.17	16.94
200	248	260	6	204	244	12	20	261	461	10	1.33	8.90	10.23	5.64	7.52	16.35	18.29

### NOTA:

- Inelul P2 si flansa P3 se sudeaza cu teava P1 cu sudura continua.  
- Ansamblul piesei de trecere se monteaza in cofraj inainte de turnarea betonului in pereti.  
- Etansarea la trecerea prin peretii caminului se va face cu franghie gudronata si dop din mastic, sau chit polisulfidic.

### LEGENDA:

di = diametru interior  
de = diametru exterior  
δ = grosime  
S = inaltimea inelului opritor

### LEGENDA



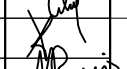

- Pereti camin din b.a. C16/20
- Placa din b.a. C16/20
- Radier din b.a. C16/20
- Beton de panta
- Tencuiala hidroizolanta tip Maxseal
- Hidroizolatie bituminoasa 2P+2C;
- Trepte din otel Ø16
- Beton simplu - egalizare C8/10
- Capac metalic camin
- Umplutura de pamant

Piese de trecere pentru trecerea conductelor se vor amplasa si confectiona conform planselor de instalatii hidraulice .  
Piese de trecere se vor monta in cofraje inainte de turnarea betonului.

### Nota:

- Acoperire cu beton a :
- pereti camin : a=3 cm ;
  - radier : a=3 cm ;
  - placa cota ±0.00 : a=3 cm ;

Materiale folosite: Armatura PC52, OB37;  
Betonul folosit :  
- C16/20 , T3 - P8 - l 32.5/0.31  
- C 8/10 - egalizari

VERIFICATOR	NUME	SEMNATURA	CERINTA	REFERAT / EXPERTIZA	DATA
S.C. AQUA PROJECT S.R.L. Str. Petru Rares, nr.63 Bl. A4, Sc. B, Ap. 9 , Piatra Neamt Fax : 0233/624426 C.U.I. J27/580/2010 C.I.F. RO-27559846 e-mail:aquaproject@yahoo.com				<b>DENUMIREA PROIECTULUI:</b> "EXECUTIE FORAJ DE ALIMENTARE CU APA (F4, 150M) SI RESEA DE ADUCTIUNE APA IN LOCALITATEA RAFAILA, COMUNA RAFAILA, JUDETUL VASLUI"	PROIECT Nr. 6103/2020
				<b>AMPLASAMENT:</b> comuna Rafaila, localitatile Rafaila	
				<b>BENEFICIAR:</b> Comuna Rafaila, judetul VASLUI	
PROIECTAT	ing. Marius BUSCU C-TIN		SCARA 1:50	<b>CAMINE PE RESEAU DE ADUCTIUNE 1.20x1.50 m, H=1.50 m</b> Vederea A-A - Plan cofraj Sectiunea 4-4 - Plan Sapatura si cofraj Detaliu Piesa de trecere prin pereti	FAZA P.Th.
DESENAT	ing. Ciurlic Iulian		DATA 2020		PLANS R 03
VERIFICAT	ing. Tudor ALCAZ				
SEF PROIECT	ing. Marius BUSCU C-TIN	